

Tmax XT circuit breakers

MCCB for power distribution & Generator Protection



Type	I _n (40° C) [A]	U _e [V]		Category	Release	I _{cu} (380 - 415 V AC) [kA]											
		AC	DC			16	25	36	50	70	85	100	120	150	200		
XT1	160	690	500	A	TMD/TMF	B	C	N	S	H							
XT2	160	690	500	A	TMD/TMA Ekip Dip LS/I Ekip Dip LIG / Dip LSIG Ekip C Dip LSIG Ekip Touch LSIG / Hi-Touch Ekip Touch Measuring LSIG Ekip G Dip LS/I Ekip G Touch LSIG/ G Hi-Touch			N	S	H			L	V			
XT3	250	690	500	A	TMD TMG			N	S								
XT4	250	690	750	A	TMD/TMA Ekip Dip LS/I Ekip Dip LIG / Dip LSIG Ekip C Dip LSIG Ekip Touch LSIG / Hi-Touch Ekip Touch Measuring LSIG Ekip G Dip LS/I Ekip G Touch LSIG/ G Hi-Touch			N	S	H			L	V	X		
XT5	400 630	690	750	B (500 A) A (630 A)	TMA TMG Ekip Dip LS/I Ekip Dip LIG / Dip LSIG Ekip Touch LSIG / Hi-Touch Ekip Touch Measuring LSIG Ekip G Dip LS/I Ekip G Touch LSIG/ G Hi-Touch			N	S	H			L		V, X		
XT6	630 800	690	750	B (630A - 800 A)	TMA Ekip Dip LS/I Ekip Dip LIG / Dip LSIG Ekip G Dip LS/I			N	S	H							
XT7/ XT7M	1000 1250 1600	690		B	Ekip Dip LS/I Ekip Dip LIG / Dip LSIG Ekip Touch LSIG / Hi-Touch Ekip Touch Measuring LSIG Ekip G Dip LS/I Ekip G Touch LSIG/ G Hi-Touch				S	H			L				

Trip Units

Thermal magnetic trip units

- TMF - Fixed thermal and fixed magnetic for power distribution
- TMD - Adjustable thermal (70-100% of I_n) and fixed magnetic (10 x I_n) for power distribution
- TMA - Adjustable thermal (70-100% of I_n) and adjustable magnetic (5-10 of I_n) for power distribution
- TMG - Adjustable thermal (70-100% of I_n) and low fixed magnetic (3 x I_n) for generator protection

Microprocessor based trip units

Ekip Dip LS/I	L = 0.40 - 1 I _n	Ekip Dip LIG	L = 0.40 - 1 I _n	Ekip Dip LSIG	L = 0.4 - 1 I _n	Ekip Touch LSIG/ Touch measuring LSIG/	L = 0.4 - 1 I _n
Ekip G Dip LS/I	S = 1 - 10 I _n		I = 1 - 10 I _n	Ekip C Dip LSIG	S = 1 - 10 I _n ⁽¹⁾	Hi-Touch LSIG	S = 0.6 - 10 I _n
	I = 1 - 10 I _n		G = 0.2 - 1 I _n	(XT2...XT6)	I = 1 - 10 I _n ⁽¹⁾	Ekip G Touch LSIG/ G Hi-Touch LSIG	I = 1.5 - 10 I _n ⁽²⁾
					G = 0.2 - 1 I _n ⁽¹⁾		G = 0.1 - 1 I _n

Note :

L = Overload S = Short circuit I = Instantaneous short circuit G = Earth fault

⁽¹⁾ for XT7 Dip, S = 0.6 to 10 I_n, I = 1.5 to 15 I_n, G = 0.1 to 1 I_n

⁽²⁾ for XT7 Touch, I = 1.5 to 15 I_n, G = 0.1 to 1 I_n

For detailed information about trip units, refer technical catalogue.

Tmax XT power distribution circuit breakers

Protection: TMD/TMF

XT1/XT3

Breaking capacity at 415VAC

	Icu	Ics (Icu)
B	18kA	100%
C	25kA	100%
N	36kA	100%

Breaking capacity at 415VAC

	Icu	Ics (Icu)
S	50kA	100% ¹⁾
H	70kA	100% ²⁾

TMD/TMF

Frame	In (A)	Poles	B		C	
			Ordering code	L.P.(₹)	Ordering code	L.P.(₹)
XT1 160	16	3	1SDA066799R1	11,010	1SDA080825R1	12,220
	20		1SDA066800R1		1SDA080826R1	
	25		1SDA066801R1		1SDA067391R1	
	32		1SDA066802R1		1SDA067392R1	
	40		1SDA066803R1 ■		1SDA067393R1 ■	
	50		1SDA066804R1 ■		1SDA067394R1 ■	
	63		1SDA066805R1 ■		1SDA067395R1 ■	
	80		1SDA066806R1 ■		1SDA067396R1 ■	
	100		1SDA066807R1 ■		1SDA067397R1 ■	
	125	1SDA066808R1 ■	1SDA067398R1 ■	19,100		
	160	1SDA066809R1 ■	1SDA067399R1 ■	24,560		
	16	4	1SDA066810R1	15,300	1SDA080840R1	17,530
	20		1SDA066811R1		1SDA080841R1	
	25		1SDA066812R1		1SDA067400R1	
	32		1SDA066813R1 ■		1SDA067401R1 ■	
	40		1SDA066814R1 ■		1SDA067402R1 ■	
	50		1SDA066815R1		1SDA067403R1 ■	
	63		1SDA066816R1 ■		1SDA067404R1 ■	
80	1SDA066817R1 ■		1SDA067405R1 ■			
100	1SDA066818R1 ■		1SDA067406R1 ■			
125	1SDA066888R1 ■	1SDA067409R1 ■	23,080			
160	1SDA066821R1 ■	1SDA067410R1 ■	29,740			

TMD / TMF

Frame	In (A)	Poles	N		S		H	
			Ordering code	L.P.(₹)	Ordering code	L.P.(₹)	Ordering code	L.P.(₹)
XT1 160	16	3	1SDA080827R1*	15,820	1SDA080830R1*	16,480	1SDA080835R1*	19,570
	20		1SDA080828R1*		1SDA080831R1*		1SDA080836R1*	
	25		1SDA080829R1		1SDA080832R1		1SDA080837R1	
	32		1SDA067411R1		1SDA080833R1 ■		1SDA080838R1	
	40		1SDA067412R1 ■		1SDA080834R1 ■		1SDA080839R1	
	50		1SDA067413R1 ■		1SDA067431R1		1SDA067449R1	
	63		1SDA067414R1 ■		1SDA067432R1 ■		1SDA067450R1	
	80		1SDA067415R1 ■		1SDA067433R1 ■		1SDA067451R1	
	100		1SDA067416R1 ■		1SDA067434R1 ■		1SDA067452R1	
	125	1SDA067417R1 ■	1SDA067435R1 ■	1SDA067453R1	29,590			
	160	1SDA067418R1 ■	1SDA067436R1 ■	1SDA067454R1	33,760			
	16	4	1SDA080842R1*	20,240	1SDA080845R1*	24,110	1SDA080850R1*	27,170
	20		1SDA080843R1*		1SDA080846R1*		1SDA080851R1*	
	25		1SDA080844R1 ■		1SDA080847R1		1SDA080852R1	
	32		1SDA067419R1 ■		1SDA080848R1		1SDA080853R1	
	40		1SDA067420R1 ■		1SDA080849R1		1SDA080854R1	
	50		1SDA067421R1		1SDA067439R1		1SDA067457R1	
	63		1SDA067422R1 ■		1SDA067440R1 ■		1SDA067458R1	
80	1SDA067423R1 ■		1SDA067441R1		1SDA067459R1			
100	1SDA067424R1 ■		1SDA067442R1 ■		1SDA067460R1			
125	1SDA067427R1 ■	1SDA067445R1 ■	1SDA067463R1	34,980				
160	1SDA067428R1 ■	1SDA067446R1	1SDA067464R1	36,990				
XT3 250	200	3	1SDA068058R1 ■	34,240	1SDA068220R1 ■	36,370		
	250		1SDA068059R1 ■		1SDA068221R1 ■		37,370	
XT3 250	200	4	1SDA068069R1 ■	38,860	1SDA068231R1 ■	41,840		
	250		1SDA068070R1 ■		1SDA068232R1 ■		42,840	



*TMF trip unit

Note: ¹⁾ for XT1 Ics = 75% Icu and XT3 Ics = 50% Icu. ²⁾ for XT1 Ics = 50% Icu

■ Stock items

Tmax XT power distribution circuit breakers

Protection: TMD/TMA - 3 Pole

XT2/XT4/XT5/XT6

Breaking capacity at 415VAC

	Icu	Ics (Icu)
N	36kA	100%
S	50kA	100%
H	70kA	100%



TMD / TMA*

TMD / TMA*			N		S		H		
Frame	In (A)	Poles	Ordering code	L.P.(₹)	Ordering code	L.P.(₹)	Ordering code	L.P.(₹)	
XT2 160	1.6	3	1SDA067000R1	18,700	1SDA067540R1	22,490	1SDA067584R1	28,890	
	2		1SDA067001R1		1SDA067541R1		1SDA067585R1		
	2.5		1SDA067002R1		1SDA067542R1		1SDA067586R1		
	3.2		1SDA067003R1		1SDA067543R1		1SDA067587R1		
	4		1SDA067004R1		1SDA067544R1		1SDA067588R1		
	5		1SDA067005R1		1SDA067545R1		1SDA067589R1		
	6.3		1SDA067006R1		1SDA067546R1		1SDA067590R1		
	8		1SDA067007R1		1SDA067547R1		1SDA067591R1		
	10		1SDA067008R1		1SDA067548R1 ■		1SDA067592R1		
	12.5		1SDA067009R1		1SDA067549R1		1SDA067593R1		
	16		1SDA067010R1 ■		1SDA067550R1 ■		1SDA067594R1		
	20		1SDA067011R1 ■		1SDA067551R1		1SDA067595R1		
	25		1SDA067012R1		1SDA067552R1 ■		1SDA067596R1		
	32		1SDA067013R1 ■		1SDA067553R1 ■		1SDA067597R1		
	40		1SDA067014R1 ■		1SDA067554R1 ■		1SDA067598R1		26,500
	50		1SDA067015R1		1SDA067555R1 ■		1SDA067599R1		
63	1SDA067016R1 ■	1SDA067556R1 ■	1SDA067600R1 ■						
80	1SDA067017R1	1SDA067557R1 ■	1SDA067601R1						
100	1SDA067018R1 ■	1SDA067558R1 ■	1SDA067602R1 ■						
125	1SDA067019R1 ■	1SDA067559R1 ■	1SDA067603R1 ■	55,030					
160	1SDA067020R1 ■	1SDA067560R1 ■	1SDA067604R1	49,970					
XT4 250	200	1SDA068090R1 ■	35,330	1SDA068310R1 ■	39,480	1SDA068343R1	56,420		
	225	1SDA068091R1	38,330	1SDA068311R1	40,750	1SDA068344R1	56,420		
	250	1SDA068092R1 ■	40,020	1SDA068312R1 ■	56,420	1SDA068345R1 ■	57,890		
	320	1SDA100344R1 ■	41,920	1SDA100414R1 ■	48,870	1SDA100484R1 ■	63,930		
XT5 630	400	1SDA100345R1 ■	43,920	1SDA100415R1 ■	50,400	1SDA100485R1 ■	65,930		
	500	1SDA100346R1 ■	54,900	1SDA100416R1 ■	62,000	1SDA100486R1 ■	79,780		
	630	1SDA100347R1 ■	63,320	1SDA100417R1 ■	67,560	1SDA100487R1 ■	83,230		
XT6 800	800	1SDA100718R1 ■	83,880	1SDA100740R1 ■	91,970	1SDA100762R1 ■	96,000		

* 40 A onwards

■ Stock items

Tmax XT power distribution circuit breakers

Protection: TMD/TMA - 4 Pole

XT2/XT4/XT5/XT6

Breaking capacity at 415VAC

	Icu	Ics (Icu)
N	36kA	100%
S	50kA	100%
H	70kA	100%



TMD / TMA*

			N		S		H	
Frame	In (A)	Poles	Ordering code	L.P.(₹)	Ordering code	L.P.(₹)	Ordering code	L.P.(₹)
XT2160	1.6	4	1SDA067021R1	26,020	1SDA067561R1	27,630	1SDA067605R1	37,040
	2		1SDA067022R1		1SDA067562R1		1SDA067606R1	
	2.5		1SDA067023R1		1SDA067563R1		1SDA067607R1	
	3.2		1SDA067024R1		1SDA067564R1		1SDA067608R1	
	4		1SDA067025R1		1SDA067565R1		1SDA067609R1	
	5		1SDA067026R1		1SDA067566R1		1SDA067610R1	
	6.3		1SDA067027R1		1SDA067567R1		1SDA067611R1	
	8		1SDA067028R1		1SDA067568R1		1SDA067612R1	
	10		1SDA067029R1		1SDA067569R1		1SDA067613R1	
	12.5		1SDA067030R1		1SDA067570R1		1SDA067614R1	
	16		1SDA067031R1		1SDA067571R1		1SDA067615R1	
	20		1SDA067032R1		1SDA067572R1		1SDA067616R1	
	25		1SDA067033R1		1SDA067573R1		1SDA067617R1	
	32		1SDA067034R1		1SDA067574R1 ■		1SDA067618R1	
	40		1SDA067035R1		1SDA067575R1		1SDA067619R1	
	50		1SDA067036R1		1SDA067576R1		1SDA067620R1	
63	1SDA067037R1 ■	1SDA067577R1 ■	1SDA067621R1					
80	1SDA067038R1	1SDA067578R1	1SDA067622R1					
100	1SDA067039R1 ■	1SDA067579R1 ■	1SDA067623R1					
125	1SDA067042R1 ■	1SDA067582R1 ■	1SDA067626R1					
160	1SDA067043R1 ■	1SDA067583R1 ■	1SDA067627R1					
XT4 250	200	1SDA068109R1 ■	1SDA068329R1 ■	1SDA068362R1				
	225	1SDA068110R1	1SDA068330R1	1SDA068363R1				
	250	1SDA068111R1 ■	1SDA068331R1 ■	1SDA068364R1				
XT5 630	320	1SDA100383R1 ■	1SDA100453R1 ■	1SDA100519R1 ■				
	400	1SDA100385R1 ■	1SDA100455R1 ■	1SDA100521R1 ■				
	500	1SDA100387R1 ■	1SDA100457R1 ■	1SDA100523R1 ■				
	630	1SDA100389R1 ■	1SDA100459R1 ■	1SDA100525R1 ■				
XT6 800	800	1SDA100731R1 ■	1SDA100753R1 ■	1SDA100775R1 ■				

* 40 A onwards

Tmax XT power distribution circuit breakers

Protection: LS/I

XT2/XT4/XT5/XT6

Breaking capacity at 415VAC

	Icu	Ics (Icu)
N	36kA	100%
S	50kA	100%
H	70kA	100%



Tmax XT is the latest generation MCCB up to 1600 A / 690V AC

- IEC 60947-2 certification
- Adjustable overload, selective short circuit/ Instantaneous Short circuit protection
- LEDs on the front provide information about protection tripped
- The trip unit records and stores trip history
- Switchable thermal memory
- Trip unit upgradable for advance protections
- Communication of MCCB status possible on Modbus RTU/TCP using Ekip Com STA Module
- Front connector allows the connection of Ekip TT and Ekip T&P for testing and programming

XT2 / XT4 / XT5 / XT6

			N		S		H	
Frame	In (A)	Poles	Ordering code	L.P. (₹)	Ordering code	L.P. (₹)	Ordering code	L.P. (₹)
XT2 160	10	3	1SDA067054R1	26,450	1SDA067800R1	31,180	1SDA067857R1	39,960
	25		1SDA067055R1		1SDA067801R1		1SDA067858R1	
	63		1SDA067056R1		1SDA067802R1		1SDA067859R1	
	100		1SDA067057R1		1SDA067803R1		1SDA067860R1	
	160		1SDA067058R1		1SDA067804R1		1SDA067861R1	
XT4 250	250		1SDA068126R1	45,320	1SDA068475R1	51,730	1SDA068515R1	59,200
XT5 400	400		1SDA100354R1	65,010	1SDA100424R1	67,370	1SDA100490R1	76,100
XT5 630	630		1SDA100355R1	70,720	1SDA100425R1	71,180	1SDA100491R1	83,270
XT6 800	800	4	1SDA100719R1	86,270	1SDA100741R1	95,630	1SDA100763R1	1,15,260
	10		1SDA067090R1		1SDA067833R1		1SDA067890R1	
	25		1SDA067091R1		1SDA067834R1		1SDA067891R1	
	63		1SDA067092R1		1SDA067835R1		1SDA067892R1	
	100		1SDA067093R1		1SDA067836R1		1SDA067893R1	
	160		1SDA067095R1	48,070	1SDA067838R1	53,950	1SDA067895R1	69,840
XT4 250	250		1SDA068147R1	65,140	1SDA068495R1	69,760	1SDA068535R1	79,900
XT5 400	400		1SDA100396R1	74,360	1SDA100466R1	87,730	1SDA100528R1	1,00,000
XT5 630	630		1SDA100397R1	82,070	1SDA100467R1	92,260	1SDA100529R1	1,22,440
XT6 800	800		1SDA100732R1	91,470	1SDA100754R1	1,17,020	1SDA060294R1	1,42,680

■ Stock items

Tmax XT power distribution circuit breakers

Protection: LIG

XT2/XT4/XT5/XT6

Breaking capacity at 415VAC

	Icu	Ics (Icu)
N	36kA	100%
S	50kA	100%
H	70kA	100%



Tmax XT is the latest generation product up to 1600 A / 690V AC

- IEC 60947-2 certification
- Adjustable overload, Instantaneous short circuit and Ground fault protection
- LEDs on the front provide information about protection tripped
- The trip unit records and stores trip history
- Switchable thermal memory
- Trip unit upgradable for advance protections
- Communication of MCCB status possible Modbus RTU/TCP using Ekip Com STA Module
- Front connector allows the connection of Ekip TT, Ekip T&P for testing and programming

Tmax XT Ekip LIG

Ekip LIG		
Frame	In (A)	Poles
XT2 160	63	3
	100	
	160	
XT4 250	250	
	400	
XT5 630	630	
	800	
XT6 800	1000	

N Version (Icu=Ics=36kA @ 415 V AC)	
Ordering Code	L.P.(₹)
1SDA100012R1 ■	39,100
1SDA100013R1 ■	
1SDA100014R1 ■	
1SDA100185R1 ■	53,860
1SDA100380R1	68,120
1SDA100381R1	75,860
1SDA100728R1	1,00,600

S Version (Icu=Ics=50kA @ 415 V AC)	
Ordering Code	L.P.(₹)
1SDA100042R1 ■	44,450
1SDA100043R1 ■	
1SDA100044R1 ■	
1SDA100215R1 ■	57,240
1SDA100450R1	70,090
1SDA100451R1	77,590
1SDA100750R1	1,14,270
1SDA100887R1	Upon Request

H Version (Icu=Ics=70kA @ 415 V AC)	
Ordering Code	L.P.(₹)
1SDA100072R1 ■	53,070
1SDA100073R1 ■	
1SDA100074R1 ■	
1SDA100245R1 ■	63,800
1SDA100516R1	95,170
1SDA100517R1	99,990
1SDA100772R1	1,37,740
1SDA100951R1	Upon request

Tmax XT Ekip LIG

Ekip LIG		
Frame	In (A)	Poles
XT2 160	63	4
	100	
	160	
XT4 250	250	
	400	
XT5 630	630	
	800	
XT6 800	1000	

N Version (Icu=Ics=36kA @ 415 V AC)	
Ordering Code	L.P.(₹)
1SDA100027R1 ■	46,680
1SDA100028R1 ■	
1SDA100029R1 ■	
1SDA100200R1 ■	61,620
1SDA100412R1	75,880
1SDA100413R1	92,520
1SDA100738R1	1,25,720

S Version (Icu=Ics=50kA @ 415 V AC)	
Ordering Code	L.P.(₹)
1SDA100057R1 ■	51,090
1SDA100058R1 ■	
1SDA100059R1 ■	
1SDA100230R1 ■	65,160
1SDA100482R1	83,660
1SDA100483R1	1,00,170
1SDA100760R1	1,34,890
1SDA101167R1	Upon Request

H Version (Icu=Ics=70kA @ 415 V AC)	
Ordering Code	L.P.(₹)
1SDA100087R1 ■	63,600
1SDA100088R1 ■	
1SDA100089R1 ■	
1SDA100260R1 ■	92,850
1SDA100544R1	1,62,470
1SDA100545R1	1,91,420
1SDA100782R1	1,79,640
1SDA101223R1	Upon Request

■ Stock items

Tmax XT power distribution circuit breakers

Protection: LSIG

XT2/XT4/XT5/XT6

Breaking capacity at 415VAC

	Icu	Ics (Icu)
N	36kA	100%
S	50kA	100%
H	70kA	100%



Tmax XT Ekip Dip LSIG*
(non-communicable)

			N	S	H			
Frame	In (A)	Poles	Ordering code	L.P. (₹)	Ordering code	L.P. (₹)	Ordering code	L.P. (₹)
XT2 160	10	3	1SDA100005R1	60,080	1SDA100035R1	63,860	1SDA100065R1	68,350
	25		1SDA100006R1		1SDA100036R1		1SDA100066R1	
	63		1SDA100007R1		1SDA100037R1		1SDA100067R1	
	100		1SDA100008R1		1SDA100038R1		1SDA100068R1	
	160		1SDA100009R1		1SDA100039R1		1SDA100069R1	
XT4 250	250	3	1SDA100180R1	66,560	1SDA100210R1	69,870	1SDA100240R1	76,500
	320A		1SDA100361R1		1SDA100431R1		1SDA100497R1	
XT5 630	400A	3	1SDA100362R1	86,120	1SDA100432R1	88,780	1SDA100498R1	1,02,550
	630A		1SDA100363R1		1SDA100433R1		1SDA100499R1	
XT6 800	800A	3	1SDA100723R1	1,25,000	1SDA100745R1	1,32,020	1SDA100767R1	1,50,240
XT2 160	10	4	1SDA100020R1	60,750	1SDA100050R1	69,110	1SDA100080R1	82,220
	25		1SDA100021R1		1SDA100051R1		1SDA100081R1	
	63		1SDA100022R1		1SDA100052R1		1SDA100082R1	
	100		1SDA100023R1		1SDA100053R1		1SDA100083R1	
	160		1SDA100024R1		1SDA100054R1		1SDA100084R1	
XT4 250	250	4	1SDA100195R1	82,470	1SDA100225R1	83,640	1SDA100255R1	97,560
	320A		1SDA100403R1		1SDA100473R1		1SDA100535R1	
XT5 630	400A	4	1SDA100404R1	96,740	1SDA100474R1	1,02,270	1SDA100536R1	1,13,280
	630A		1SDA100405R1		1SDA100475R1		1SDA100537R1	
XT6 800	800A	4	1SDA100736R1	1,40,070	1SDA100758R1	1,52,020	1SDA100780R1	1,90,360

* Communication of status possible Modbus RTU/TCP using Ekip Com STA Module

XT2 / XT4 Ekip C Dip LSIG*
(Communication capable)

			N	S	H			
Frame	In (A)	Poles	Ordering code	L.P. (₹)	Ordering code	L.P. (₹)	Ordering code	L.P. (₹)
XT2 160	25	3	1SDX272178R1	66,010	1SDX356683R1	70,880	1SDX357425R1	76,260
	63		1SDX268780R1		1SDX268791R1		1SDX268803R1	
	100		1SDX268782R1		1SDX268793R1		1SDX268805R1	
	160		1SDX268781R1		1SDX268795R1		1SDX268807R1	
XT4 250	250	3	1SDX268811R1	72,760	1SDX268816R1	76,770	1SDX268820R1	83,800
XT2 160	25	4	1SDX356687R1	70,610	1SDX356691R1	73,560	1SDX357427R1	88,810
	63		1SDX356689R1		1SDX356692R1		1SDX356709R1	
	100		1SDX356695R1		1SDX356694R1		1SDX356710R1	
	160		1SDX356690R1		1SDX356693R1		1SDX356711R1	
XT4 250	250	4	1SDX356716R1	89,050	1SDX356717R1	90,290	1SDX356718R1	1,05,150

* Communication of MCCB release data possible, refer Tmax XT accessories

■ Stock items

Tmax XT power distribution circuit breakers

Protection: LS/I, LSIG

- IEC 60947-2 certification
- Rating available upto 1600A
- Performance upto 100kA
- For motorized version consider XT7M & Motor operator

XT7

Breaking capacity at 415VAC

	Icu	Ics (Icu)
S	50kA	100%
H	70kA	100%

XT7 Ekip Dip LS/I

Frame	In (A)	Poles	S		H	
			Ordering code	L.P. (₹)	Ordering code	L.P. (₹)
XT7	800A	3	1SDA100826R1	Upon request	1SDA100890R1	Upon request
	1000A		1SDA100827R1		1SDA100891R1	
	1250A		1SDA100828R1		1SDA100892R1	
	1600A		1SDA100829R1		1SDA100893R1	
XT7M	800A	3	1SDA101366R1	Upon request	1SDA101430R1	Upon request
	1000A		1SDA101367R1		1SDA101431R1	
	1250A		1SDA101368R1		1SDA101432R1	
XT7	1600A	4	1SDA101369R1	Upon request	1SDA101433R1	Upon request
	800A		1SDA101114R1		1SDA101170R1	
	1000A		1SDA101115R1		1SDA101171R1	
	1250A		1SDA101116R1		1SDA101172R1	
XT7M	1600A	4	1SDA101117R1	Upon request	1SDA101173R1	Upon request
	800A		1SDA101654R1		1SDA101710R1	
	1000A		1SDA101655R1		1SDA101711R1	
	1250A		1SDA101656R1		1SDA101712R1	
XT7M	1600A	4	1SDA101657R1	Upon request	1SDA101713R1	Upon request



XT7 Ekip Dip LSIG

Frame	In (A)	Poles	S		H	
			Ordering code	L.P. (₹)	Ordering code	L.P. (₹)
XT7	800A	3	1SDA100834R1	Upon request	1SDA100898R1	Upon request
	1000A		1SDA100835R1		1SDA100899R1	
	1250A		1SDA100836R1		1SDA100900R1	
	1600A		1SDA100837R1		1SDA100901R1	
XT7M	800A	3	1SDA101374R1	Upon request	1SDA101438R1	Upon request
	1000A		1SDA101375R1		1SDA101439R1	
	1250A		1SDA101376R1		1SDA101440R1	
XT7	1600A	4	1SDA101377R1	Upon request	1SDA101441R1	Upon request
	800A		1SDA101122R1		1SDA101178R1	
	1000A		1SDA101123R1		1SDA101179R1	
	1250A		1SDA101124R1		1SDA101180R1	
XT7M	1600A	4	1SDA101125R1	Upon request	1SDA101181R1	Upon request
	800A		1SDA101662R1		1SDA101718R1	
	1000A		1SDA101663R1		1SDA101719R1	
	1250A		1SDA101664R1		1SDA101720R1	
XT7M	1600A	4	1SDA101665R1	Upon request	1SDA101721R1	Upon request



Tmax XT switch disconnectors

SACE Tmax XT switch-disconnectors

- IEC 60947-3 certification utilization category
- These devices are mainly used as:
 - General disconnection devices in sub-switchboards;
 - Switching and insulation devices for lines, busbars or groups of apparatus;
 - Bus ties.
- Switch-disconnector must be protected on the supply side by a coordinated device which safeguards it against short-circuits.
- Able to withstand The dynamic, thermal and current stresses with the right Making capacity(Icm)

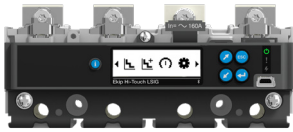


Frame	In(A)	Icw kA (1s)	Poles	Ordering code	L.P.(₹)	Poles	Ordering code	L.P.(₹)
XT1D	160	2	3	1SDA068208R1	13,460	4	1SDA068209R1	19,870
XT3D	250	3		1SDA068210R1	29,510		1SDA068211R1	35,250
XT4D	250	3.6		1SDA068212R1	33,660		1SDA068213R1	44,610
XT5D	400	3.6		1SDA100546R1	48,830		1SDA100548R1	52,620
	630	3.6		1SDA100547R1	54,890		1SDA100549R1	66,970
XT6D	800	15		1SDA100784R1	65,680		1SDA100786R1	1,14,130
	1000	20		1SDA101906R1			1SDA101909R1	
XT7D	1250	20		1SDA101907R1			1SDA101910R1	
	1600	20		1SDA101908R1	Upon request		1SDA101911R1	Upon request
	1000	20		1SDA101912R1			1SDA101915R1	
XT7D M	1250	20		1SDA101913R1			1SDA101916R1	
	1600	20		1SDA101914R1	1SDA101917R1			

Tmax XT Power distribution circuit breakers

Breaking new grounds : Ekip Touch series

XT2 / XT4 (LCD display)



XT5 (Touch display)



- **Communication and connectivity:** Supports 7 onboard communication protocols :
Modbus RTU
Modbus TCP
Profibus
Profinet
Ethernet/IP
Devicenet
IEC61850
- **Digital upgrade:** Digital upgrading of measurements and protections using software package
- **Ease of use Interface:** LCD display for XT2/XT4 and Touch display for XT5. BLE (Bluetooth low energy enabled)
- **Commissioning:** The setting, testing and downloading of reports can be carried out directly from a smartphone, tablet or PC
- **Watchdog:** Tmax XT ensure high reliability thanks to an electronic circuit that periodically checks the continuity of the internal connections, such as the trip coil, rating plug and each current sensor (ANSI 74). In the event of an alarm, a message is shown on the display.
- **Internal over temperature protection:** Ekip Touch/ Ekip Touch measuring also features self-protection, which ensures the correct operation of the unit in overtemperatures (OT) inside the protection trip unit.
- **Maintenance features:**
Information of last 30 trips and 200 events.
No. of mechanical operations. Total operating time (in hours).
Contact wear and tear in %.
Date of maintenance operations performed.
Indication of maintenance operation needed.
Failure of circuit-breaker to open (ANSI 50BF)

Protections

- L,S,I & G protections
- Neutral protection
- 2nd instantaneous protection (2I)
- MCR (making current release) - Closing on short circuit protection
- Current unbalance
- Harmonic distortion
- 2nd time delayed over current protection (S2)
- Current thresholds
- ROCOF (Rate of change of frequency)
- Synchrocheck
- Residual current protection (Rc)



Instantaneous measurements			Ekip Touch	Ekip Touch Measuring
Currents (RMS)	L1, L2, L3, Ne	[A]	●	●
Ground fault current (RMS)	Ig	[A]	●	●
Measuring package				
Phase-phase voltage (RMS)	U12, U23, U31	[V]	○	●
Phase-neutral voltage (RMS)	U1, U2, U3	[V]	○	●
Phase sequence			○	●
Frequency	f	[Hz]	○	●
Active power	P1, P2, P3, Ptot	[kW]	○	●
Reactive power	Q1, Q2, Q3, Qtot	[kVAR]	○	●
Apparent power	S1, S2, S3, Stot	[KVA]	○	●
Power factor	PF1, PF2, PF3, PF total		○	●
Peak factor	total		○	●
Active energy	Ep total, Ep positive, Ep negative	[kWh]	○	●
Reactive energy	Eq total, Ep positive, Ep negative	[kVARh]	○	●
Apparent energy	Es total	[KVAh]	○	●

- Available as standard
- Available as software package to be ordered via offline software activation or during the circuit-breaker ordering phase

Tmax XT Power distribution circuit breakers

Breaking new grounds : Ekip Touch series

Standard Protection	Standard Measures	Measuring Package	Voltage Protections	Frequency Protections	Power Protections	Adaptive Protections	Data Logger	Network Analyzer	Advanced Voltage Protections	ROCOF	Power Controller

Ekip Touch	●	●	↑	↑	↑	↑	↑	↑	↑	↑	↑	↑
Ekip Touch Measuring	●	●	●	↑	↑	↑	↑	↑	↑	↑	↑	↑
Ekip G Touch	●	●	●	↑	↑	↑	●	↑	↑	↑	↑	↑
Ekip M Touch	●	●	●	●	●	↑	●	↑	↑	↑	↑	↑
Ekip Hi-Touch	●	●	●	●	●	↑	●	●	↑	↑	↑	↑
Ekip G Hi-Touch	●	●	●	●	●	●	●	●	●	●	●	↑

● Available by default

↑ Updraggable

↑ Some functions available. Updraggable with the full package.

Ekip Touch LSIG

			N		S		H					
Frame	Current rating	No. of poles	Ordering code	L.P.(₹)	Ordering code	L.P.(₹)	Ordering code	L.P.(₹)				
XT2	100A	3	1SDX048780R1	Upon request	1SDX048814R1	Upon request	1SDX048850R1	Upon request				
	160A		1SDX048781R1		1SDX048815R1		1SDX048851R1					
XT4	250A		1SDX049224R1		1SDX049232R1		1SDX049241R1					
	320A		1SDX049830R1		1SDX049906R1		1SDX049982R1					
XT5	400A		1SDX049831R1		1SDX049907R1		1SDX049983R1					
	630A		1SDX049857R1		1SDX049933R1		1SDX050009R1					
XT7	800A		1SDA100842R1		1SDA100843R1		1SDA100906R1					
	1000A		1SDA100843R1		1SDA100844R1		1SDA100907R1					
	1250A		1SDA100844R1		1SDA100845R1		1SDA100908R1					
	1600A		1SDA100845R1		1SDA100846R1		1SDA100909R1					
XT2	100A		4		1SDX049027R1		Upon request		1SDX049055R1	Upon request	1SDX049083R1	Upon request
	160A				1SDX049028R1				1SDX049056R1		1SDX049084R1	
XT4	250A	1SDX049268R1		1SDX049275R1	1SDX049282R1							
	320A	1SDX049870R1		1SDX049946R1	1SDX050022R1							
XT5	400A	1SDX049871R1		1SDX049947R1	1SDX050023R1							
	630A	1SDX049894R1		1SDX049970R1	1SDX050046R1							
XT7*	800A	1SDA101130R1		1SDA101131R1	1SDA101186R1							
	1000A	1SDA101131R1		1SDA101132R1	1SDA101187R1							
	1250A	1SDA101132R1		1SDA101133R1	1SDA101188R1							
	1600A	1SDA101133R1		1SDA101134R1	1SDA101189R1							

Ekip Touch measuring LSIG

			N		S		H					
Frame	Current rating	No. of poles	Ordering code	L.P.(₹)	Ordering code	L.P.(₹)	Ordering code	L.P.(₹)				
XT2	100A	3	1SDX048788R1	Upon request	1SDX048822R1	Upon request	1SDX048858R1	Upon request				
	160A		1SDX048789R1		1SDX048823R1		1SDX048859R1					
XT4	250A		1SDX049226R1		1SDX049234R1		1SDX049243R1					
	320A		1SDX049836R1		1SDX049912R1		1SDX049988R1					
XT5	400A		1SDX049837R1		1SDX049913R1		1SDX049989R1					
	630A		1SDX049859R1		1SDX049935R1		1SDX050011R1					
XT7	800A		1SDA100850R1		1SDA100851R1		1SDA100914R1					
	1000A		1SDA100851R1		1SDA100852R1		1SDA100915R1					
	1250A		1SDA100852R1		1SDA100853R1		1SDA100916R1					
	1600A		1SDA100853R1		1SDA100854R1		1SDA100917R1					
XT2	100A		4		1SDX049035R1		Upon request		1SDX049063R1	Upon request	1SDX049091R1	Upon request
	160A				1SDX049036R1				1SDX049064R1		1SDX049092R1	
XT4	250A	1SDX049268R1		1SDX049277R1	1SDX049284R1							
	320A	1SDX049876R1		1SDX049952R1	1SDX050028R1							
XT5	400A	1SDX049877R1		1SDX049953R1	1SDX050029R1							
	630A	1SDX049896R1		1SDX049972R1	1SDX050048R1							
XT7*	800A	1SDA101138R1		1SDA101139R1	1SDA101194R1							
	1000A	1SDA101139R1		1SDA101140R1	1SDA101195R1							
	1250A	1SDA101140R1		1SDA101141R1	1SDA101196R1							
	1600A	1SDA101141R1		1SDA101142R1	1SDA101197R1							

* for motorized version please contact nearest branch office

Tmax XT circuit breakers

MCCB for motor protection

Type	Iu (40° C) [A]	Ue [V]		Category	Release	Icu (380 - 415 V AC) [kA]											
		AC	DC			16	25	36	50	70	85	100	120	150	200		
XT1	160	690	500	A	MF/MA	B	C	N	S	H							
XT2	160	690	500	A	MF/MA Ekip M Dip I / Dip LIU Ekip M Touch LRIU			N	S	H			L	V			
XT3	250	690	500	A	MF/MA			N	S								
XT4	250	690	750	A	MA Ekip M Dip I / Dip LIU Ekip M Touch LRIU			N	S	H			L	V	X		
XT5	400 630	690	750	B (500 A) A (630 A)	MA Ekip M Dip I / Dip LIU Ekip M Touch LRIU			N	S	H			L			V, X	
XT6	630 800	690	750	B (630A - 800 A)	Ekip M Dip I / Dip LIU			N	S	H							
XT7 / XT7M	1000 1250 1600	690		B	Ekip M Dip I Ekip M Touch LRIU				S	H			L				

Trip Units

Magnetic trip units

- MF - Magnetic only trip unit with fixed magnetic thresholds for motor protection
- MA - Magnetic only trip unit with adjustable magnetic thresholds for motor protection

Microprocessor based electronic trip units

Ekip M Dip I	I = 1 - 10 In	Ekip M Dip LIU	L = 0.40 - 1 In	Ekip M Touch LRIU	L = 0.4 - 1 In
			I = 6 - 13 In		R = 2 - 10 I ¹ *
			U = On/Off		I = 1.5 - 10 In ⁽¹⁾
					U = On/Off

L = Overload

I = Instantaneous short circuit

R = Blocked rotor

U = phase loss (U): With selector in ON position, circuit breaker trips if at least one current phase is lower than 0.1xIn and at least a second one higher than 0.25xIn;

Note: For detailed information about trip units, refer technical catalogue.

* Setting for rotor blockage - stall, refer technical catalogue.

⁽¹⁾ for XT7 Touch, I = 1.5 to 15 In, G = 0.1 to 1 In

Tmax XT motor distribution circuit breakers

Protection: Magnetic only and Microprocessor based short circuit protection MCCBs

XT2/XT4/XT5/XT6 XT3

Breaking capacity at 415VAC

	Icu	Ics (Icu)
N	36kA	100%
S	50kA	100%
H	70kA	100%

Breaking capacity at 415VAC

	Icu	Ics (Icu)
N	36KA	100%
S	50KA	50%



MF/MA*

Frame	In (A)	Poles	N		S		H		
			Ordering code	L.P. (₹)	Ordering code	L.P. (₹)	Ordering code	L.P. (₹)	
XT2 160	1	3	1SDA067044R1	19,130	1SDA067760R1	20,650	1SDA067770R1	23,200	
	2		1SDA067045R1		1SDA067761R1		1SDA067771R1		
	4		1SDA067046R1		1SDA067762R1		1SDA067772R1		
	8.5		1SDA067047R1		1SDA067763R1 ■		1SDA067773R1		
	12.5		1SDA067048R1 ■		1SDA067764R1 ■		1SDA067774R1		
	20		1SDA067049R1 ■		1SDA067765R1 ■		1SDA067775R1		
	32		1SDA067050R1 ■		1SDA067766R1 ■		1SDA067776R1		
	52		1SDA067051R1 ■		1SDA067767R1 ■		1SDA067777R1		22,280
	80		1SDA067052R1 ■		1SDA067768R1 ■		1SDA067778R1		38,350
	100		1SDA067053R1 ■		1SDA067769R1 ■		1SDA067779R1		
XT3 250	160	3	1SDA076529R1	27,560	1SDA076530R1 ■	30,070	1SDA076535R1		
	100		1SDA068071R1	23,210	1SDA068279R1	24,120			
	125		1SDA068072R1		1SDA068280R1				
	160		1SDA068073R1		1SDA068281R1				
200	1SDA068074R1	1SDA068282R1 ■	27,290						
XT4 250	200	3	1SDA068121R1	47,410	1SDA068440R1 ■	51,570	1SDA068450R1	62,440	
	320		1SDA100364R1	46,130	1SDA100434R1	52,940	1SDA100500R1	64,200	
XT5 630	400	3	1SDA100365R1	57,730	1SDA100435R1	53,440	1SDA100501R1	64,700	
	630		1SDA100366R1		1SDA100436R1	65,780	1SDA100502R1	83,980	

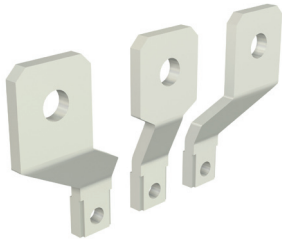
* 20 amps onwards

Ekip M Dip I

Frame	In (A)	Poles	N		S		H	
			Ordering code	L.P. (₹)	Ordering code	L.P. (₹)	Ordering code	L.P. (₹)
XT2 160	10	3	1SDA067059R1	25,880	1SDA067805R1	30,960	1SDA067862R1	33,380
	25		1SDA067060R1		1SDA067806R1		1SDA067863R1	
	63		1SDA067061R1		1SDA067807R1		1SDA067864R1	
	100		1SDA067062R1		1SDA067808R1		1SDA067865R1	
	160		1SDA067063R1		1SDA067809R1		1SDA067866R1	
XT4 250	250	3	1SDA068131R1 ■	48,890	1SDA068480R1 ■	53,020	1SDA068520R1	63,440
	400		1SDA100368R1	55,880	1SDA100438R1 ■	79,430	1SDA100504R1	1,12,420
XT5 630	630	3	1SDA100369R1	69,060	1SDA100439R1 ■	98,200	1SDA100505R1	1,38,960
	800		1SDA100725R1	92,160	1SDA100747R1	1,31,250	1SDA100769R1	1,82,870

■ Stock items

Tmax XT accessories



Accessories for Tmax MCCBs

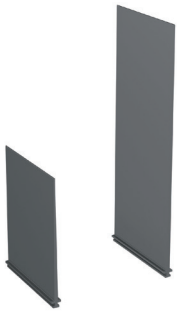
Extended spreaded terminals - ES

Frame	Kit ES 6 pcs	L.P. (₹)	Kit ES 8 pcs	L.P. (₹)
XT1	1SDA066891R1 ■	3,020	1SDA066892R1 ■	4,020
XT2	1SDA066895R1 ■	4,100	1SDA066896R1 ■	4,990
XT3	1SDA066899R1 ■	4,390	1SDA066900R1 ■	5,600
XT4	1SDA066903R1 ■	5,060	1SDA066904R1 ■	6,340
XT5	1SDA104738R1 (1/2 kit) ⁽¹⁾	3,560	1SDA104739R1 (1/2 kit) ⁽²⁾	4,720
XT6	1SDA104740R1(1/2 Kit) ⁽¹⁾	Upon request	1SDA104741R1(1/2 Kit) ⁽²⁾	Upon request
XT7	1SDA073979R1(1/2 Kit) ⁽¹⁾	Upon request	1SDA073980R1 (1/2 Kit) ⁽²⁾	Upon request

Note: Phase barrier supplied as standard with above copper spreaders.

(1) Code is for 3 pcs, if required for both top & bottom side order 2 quantities

(2) Code is for 4 pcs, if required for both top & bottom side order 2 quantities



Separator - PB

Frame	Description	3 P - 4 pcs	L.P. (₹)	4 P - 6 pcs	L.P. (₹)
XT1-XT3	PB 100mm XT1-XT3	1SDA066676R1	1,210	1SDA066681R1	1,770
	PB 200mm XT1-XT3	1SDA066678R1	1,590	1SDA066683R1	2,310
XT2-XT4	PB 100mm XT2-XT4	1SDA066675R1	1,350	1SDA066680R1	2,020
	PB 200mm XT2-XT4	1SDA066677R1 ■	2,020	1SDA066682R1	2,940
XT5	PB 100mm XT5	1SDA105002R1	1,490	1SDA105003R1	2,230
	PB 200mm XT5	1SDA105004R1	2,230	1SDA105005R1	3,240
XT6	PB 100mm XT6	1SDA105010R1	1,530	1SDA105011R1	2,450
	PB 200mm XT6	1SDA105012R1	2,640	1SDA105013R1	3,560

Rotary handle operating mechanism

Frame	RHD	L.P. (₹)	RHE	L.P. (₹)
XT1-XT3 F/P (250mm rod)	1SDA066475R1 ■	2,790	1SDA082810R1 ■	2,570
XT1-XT3 F/P (500mm rod)			1SDA066479R1	2,920
XT2-XT4 F/P (250mm rod)	1SDA069053R1 ■	3,320	1SDA082811R1 ■	3,370
XT2-XT4 F/P (500mm rod)			1SDA069055R1	3,740
XT2-XT4 W	1SDA066476R1	3,800	1SDA066480R1 ■	4,400
XT2-XT4 F/P-Left Lateral			1SDA069058R1	5,940
XT2-XT4 F/P-Right Lateral			1SDA069060R1	5,860
XT5 F/P STAND. DIRECT	1SDA104826R1	6,000	1SDA104843R1	5,800
XT5 W STAND. DIRECT	1SDA104828R1	6,960	1SDA104844R1	11,050
XT6 F/P STAND. DIRECT	1SDA104832R1	8,050	1SDA104853R1	12,050
XT6 W STAND. DIRECT	1SDA104834R1	12,050	1SDA104854R1	14,050
XT7 F/W	1SDA104838R1	17,260	1SDA104863R1	15,600

Note:- F/P: Fixed/Plug-in ; W:Withdrawable

Service releases

Shunt opening release - SOR

Frame	Description	Uncabled	L.P. (₹)	Cabled	L.P. (₹)
XT1... XT4	24-30 V AC/DC F/P	1SDA066314R1 ■		1SDA066322R1	
	220...240 V ac-220...250 V DC F/P	1SDA066317R1 ■	3,700	1SDA066325R1	5,620
	380-440 V ac F/P	1SDA066318R1		1SDA066326R1	
	24-30 V AC/DC W	-		1SDA066329R1	
	220...240 V ac-220...250 V DC W	-		1SDA066332R1	9,550
	380-440 V AC W	-		1SDA066333R1	
XT5-XT6	110..240Vac-110..250Vdc F/P	1SDA104926R1	7,020	1SDA104934R1	13,910
XT5	110..240 Vac - 110..250 Vdc W			1SDA104930R1	15,020
XT6	110..240 Vac - 110..250 Vdc W			1SDA104938R1	16,530
XT7	220...240V AC/DC	1SDA073674R1	Upon request	-	

Note: F/P: Fixed/Plug-in ; W:Withdrawable

■ Stock items

Tmax XT accessories



Under voltage release - UVR					
Frame	Description	Uncabled	L.P. (₹)	Cabled	L.P. (₹)
XT1....XT4	24-30 VAC/DC F/P	1SDA066389R1		1SDA066396R1	
	220-240Vac-220-250V DC F/P	1SDA066392R1 ■	6,810	1SDA066399R1 ■	10,600
	380-440 V AC F/P	1SDA066393R1 ■		1SDA066400R1	
	24-30 VAC/DC W			1SDA066403R1	
	220-240Vac-220-250V DC W			1SDA066406R1	11,480
XT5-XT6	380-440 V AC W			1SDA066407R1	
	24V AC/DC F/P	1SDA104941R1		1SDA104955R1	
	220...240V AC-220...250V DC F/P	1SDA104944R1	14,350	1SDA104958R1	16,230
XT5	380...440V AC F/P	1SDA104945R1		1SDA104959R1	
	220..240 Vac - 220..250 Vdc W			1SDA104951R1	17,360
XT6	220..240 Vac - 220..250 Vdc W			1SDA104965R1	
XT7	220...240V AC/DC	1SDA073700R1	Upon Request		

Note: F/P: Fixed/Plug-in ; W:Withdrawable

Electrical signals

Auxiliary contact cabled-version - AUX - C

Frame	Description	Ordering code	L.P. (₹)
XT1....XT4	AUX-C 1Q+1SY 250V AC/DC XT1..XT4 F/P	1SDA066431R1 ■	2,630
	AUX-C 2Q+1SY 250VAC/DC XT1..XT4 F/P	1SDA066433R1 ■	4,140
	AUX-C 3Q+1SY 250VAC/DC XT2..XT4 F/P	1SDA066434R1 ■	4,910
	AUX-C 3Q+2SY 250VAC/DC XT2-XT4 F/P	1SDA066436R1	6,010
	AUX-C 2Q+2SY+1S51 250VAC/DC XT2-XT4 F/P	1SDA066438R1	6,490
	AUX-C 2Q 400V AC XT2-XT4 F/P	1SDA066440R1	3,140
	AUX-C 1Q+1SY 400Vac XT2-XT4 F/P	1SDA066444R1	4,940
	AUX-C 1Q+1SY 24Vdc XT1..XT4 F/P	1SDA066446R1 ■	3,640
	AUX-C 3Q+1SY 24VDC XT2..XT4 F/P	1SDA066448R1	5,670
	XT5-XT6	AUX-C 1Q+1SY 250V AC/DC XT1..XT6 F/P	1SDA066431R1 ■
AUX-C 1Q + 1SY 400V AC/DC XT5 F/P		1SDA104784R1	9,560
AUX-C 2Q 400V AC/DC XT5 F/P		1SDA104795R1	7,340
AUX-C 3Q+1SY 24Vdc XT2..XT6 F/P		1SDA066448R1	5,670
XT7	AUX-C 3Q+1SY 250Vac/dc XT2..XT6 F/P	1SDA066434R1	4,910
	AUX 4Q 400V	1SDA073750R1	Upon request
	S51 250V	1SDA073776R1	

Note : Q=Changeover contact;SY/S51= Trip indication contact ;F/P: Fixed/Plug-in ; W:Withdrawable

Auxiliary contact - AUX (Uncabled version)

Frame	Description	Ordering code	L.P. (₹)
XT1....XT6	AUX 1Q 250Vac/dc XT1...XT6	1SDA066422R1 ■	1,620
	AUX 1Q 24Vdc XT1...XT6	1SDA066423R1	2,460

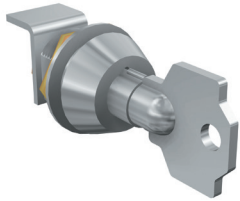
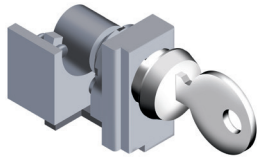
Bracket for fixing onto DIN-Rail		3 Pole		4 Pole	
Frame	Description	Ordering code	L.P. (₹)	Ordering code	L.P. (₹)
XT1	DIN50022	1SDA066652R1	2,650	1SDA066419R1	2,810
	DIN50022 +RC Low 200 mm			1SDA067134R1	3,090
XT2	DIN50022 +RC Sel/RC Inst	1SDA067135R1	3,340	1SDA067135R1	3,340
	DIN50022	1SDA080704R1	3,060	1SDA080325R1	3,060
XT3	DIN50022	1SDA066420R1	3,340	1SDA066421R1	3,340
	DIN50022 +RC Sel/RC Inst	1SDA067139R1	3,670		
XT4	DIN50022	1SDA080326R1	3,060	1SDA080327R1	3,060



■ Stock items

Tmax XT accessories

Key lock



Key Lock - KLC			
Frame	Description	Ordering code	L.P. (₹)
	KLC XT1 RONIS Key Lock Diff.Key, Removable In Open Pos.	1SDA066593R1	
	KLC XT1 RONIS Key Lock Same Key Type A, Removable in Open Pos.	1SDA066594R1	
	KLC XT1 RONIS Key Lock Same Key Type B, Removable in Open Pos.	1SDA066595R1	
	KLC XT2-XT4 RONIS Key Lock Diff.Key, Removable In Open Pos.	1SDA066599R1	
XT1....XT4	KLC XT2-XT4 RONIS Key Lock Same Key Type A, Removable in Open Pos.	1SDA066600R1	3,330
	KLC XT2-XT4 RONIS Key Lock Same Key Type B, Removable in Open Pos.	1SDA066601R1	
	KLC XT3 RONIS Key Lock Diff.Key, Removable In Open Pos.	1SDA066605R1	
	KLC XT3 RONIS Key Lock Same Key Type A, Removable in Open Pos.	1SDA066606R1	
	KLC XT3 RONIS Key Lock Same Key Type B, Removable in Open Pos.	1SDA066607R1	
	KLC XT5-XT6 RONIS Key Lock Diff.Key, Removable In Open Pos.	1SDA105066R1	
XT5-XT6	KLC XT5-XT6 RONIS Key Lock Same Key Type A, Removable in Open Pos.	1SDA105062R1	5,820
	KLC XT5-XT6 RONIS Key Lock Same Key Type B, Removable in Open Pos.	1SDA105063R1	
	KLC XT7 RONIS Key Lock Diff.Key, Removable In Open Pos.	1SDA105075R1	
XT7	KLC XT7 RONIS Key Lock Same Key Type A, Removable in Open Pos.	1SDA105071R1	Upon request
	KLC XT7 RONIS Key Lock Same Key Type B, Removable in Open Pos.	1SDA105072R1	

Key Lock for Rotary Handle & FLD - RHL			
Frame	Description	Ordering code	L.P. (₹)
	RHL XT1..XT4 KEY LOCK RONIS Diff. Keys	1SDA066617R1	
XT1....XT4	RHL XT1..XT4 KEY LOCK RONIS TYPE A	1SDA066618R1	2,640
	RHL XT1..XT4 KEY LOCK RONIS TYPE B	1SDA066619R1	
	RHL XT5 KEY LOCK RONIS Diff. Keys	1SDA105081R1	
XT5	RHL XT5 KEY LOCK RONIS TYPE A	1SDA105082R1	
	RHL XT5 KEY LOCK RONIS TYPE B	1SDA105083R1	
	RHL XT6-XT7 KEY LOCK RONIS Diff. Keys	1SDA105091R1	5,090
XT6 - XT7	RHL XT6-XT7 KEY LOCK RONIS TYPE A	1SDA105086R1	
	RHL XT6-XT7 KEY LOCK RONIS TYPE B	1SDA105087R1	

Key lock for motor operated- MOL			
Frame	Description	Ordering code	L.P. (₹)
	MOL-D XT1-XT3 KEY LOCK RONIS DIFF. KEY	1SDA066623R1	
XT1-XT3	MOL-S XT1-XT3 KEY LOCK RONIS TYPE A	1SDA066624R1	
	MOL-S XT1-XT3 KEY LOCK RONIS TYPE B	1SDA066625R1	
	MOL-D XT2-XT4 KEY LOCK RONIS DIFF. KEY	1SDA066629R1	5,620
XT2-XT4	MOL-S XT2-XT4 KEY LOCK RONIS TYPE A	1SDA066630R1	
	MOL-S XT2-XT4 KEY LOCK RONIS TYPE B	1SDA066631R1	
	MOL-D XT5-XT6 KEY LOCK RONIS DIFF. KEY	1SDA105092R1	
XT5-XT6	MOL-S XT5-XT6 KEY LOCK RONIS TYPE A	1SDA105093R1	9,860
	MOL-S XT5-XT6 KEY LOCK RONIS TYPE B	1SDA105095R1	

Key Lock or Fixed Part- KLF			
Frame	Description	Ordering code	L.P. (₹)
	KL-D Ronis key lock different keys	1SDA066298R1	
XT2-XT4	KL-S Ronis key lock Same key Type A	1SDA066300R1	5,250
	KL-D Ronis key lock different keys	1SDA105109R1	
XT5-XT6	KL-S Ronis key lock Same key Type A	1SDA105110R1	7,610

IP54 Protection for rotary handle			
Frame	Description	Ordering code	L.P. (₹)
XT1....XT4	IP54 Protection for RHE	1SDA066587R1	3,430
XT5	IP54 Protection for RHD	1SDA104876R1	24,760
XT6	IP54 Protection for RHD	1SDA104877R1	27,240
XT7	IP54 Protection for RHD	1SDA104878R1	Upon Request

Note : For other combinations of keylock, contact nearest sales office

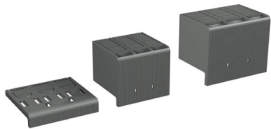
Tmax XT accessories



Pad Lock - PLL				
Frame	Description	Ordering code	L.P. (₹)	
XT1....XT4	PLL XT1-XT3 REMOV.PADL.DEVICE OPEN PLUG	1SDA066588R1		
	PLL XT1-XT3 PADLOCKS DEVICE OPEN	1SDA066589R1		
	PLL XT2-XT4 PADLOCKS DEVICE OPEN	1SDA066590R1		2,470
	PLL XT1-XT3 PADLOCKS DEVICE OP/CL	1SDA066591R1		
	PLL XT2-XT4 PADLOCKS DEVICE OP/CL	1SDA066592R1		
XT5-XT6	PLL XT5 REM.PADLOCKS DEVICE OPEN	1SDA105100R1		
	PLL XT5 PADLOCKS DEVICE OPEN	1SDA105099R1		
	PLL XT5 PADLOCKS DEVICE OP/CL	1SDA105098R1		
	PLL XT6 REM.PADLOCKS DEVICE OPEN	1SDA105103R1		6,430
	PLL XT6 PADLOCKS DEVICE OPEN	1SDA105102R1		
	PLL XT6 PADLOCKS DEVICE OP/CL	1SDA105101R1		
XT7	PLL XT7 PADLOCKS DEVICE OPEN	1SDA105104R1		Upon Request



Low insulating terminal covers - LTC					
Frame	Description	3 Pole-2 pcs	L.P. (₹)	4 Pole-2 pcs	L.P. (₹)
XT1....XT4	LTC XT1	1SDA066655R1		1SDA066656R1	
	LTC XT2	1SDA066657R1	3,130	1SDA066659R1	3,790
	LTC XT3	1SDA066660R1		1SDA066661R1	4,220
	LTC XT4	1SDA066662R1	3,300	1SDA066663R1	4,820
XT5	LTC XT5	1SDA105018R1	4,480	1SDA105019R1	6,090
XT6	LTC XT6	1SDA105020R1	4,890	1SDA105021R1	6,720
XT7	LTC XT7	1SDA107475R1	Upon request	1SDA107476R1	Upon request



High insulating terminal covers - HTC					
Frame	Description	3 Pole-2 pcs	L.P. (₹)	4 Pole-2 pcs	L.P. (₹)
XT1....XT4	HTC XT1	1SDA066664R1	4,270	1SDA066665R1	5,890
	HTC XT2	1SDA066666R1	4,840	1SDA066667R1	6,650
	HTC XT3	1SDA066668R1	5,230	1SDA066669R1	7,280
	HTC XT4	1SDA066670R1	5,830	1SDA066671R1	8,040
XT7	HTC XT7	1SDA105029R1	Upon request	1SDA105030R1	Upon request



Mechanical interlock between circuit breakers				
Frame	Description	Ordering code	L.P. (₹)	
XT1....XT4	MIR-HR XT1...XT4 MECH INTERLOCK HOR. 2 CB**	1SDA066637R1		20,480
	MIR-VR XT1...XT4 MECH INTERLOCK VER. 2 CB**	1SDA066638R1		
	MIR-P PLATE x XT1 F	1SDA066639R1		
	MIR-P PLATE x XT2 F	1SDA066641R1		
	MIR-P PLATE x XT3 F	1SDA066643R1		7,170
XT5	MIR-P PLATE x XT4 F	1SDA066645R1		
	MIR-H XT5 MECH, LOCK REAR HO. 2 C.BREAKER	1SDA105117R1		38,500
	MIR-V XT5 MECH, LOCK REAR VE. 2 C.BREAKER	1SDA105119R1		
XT6	MIR-P x XT5 F	1SDA105122R1		9,970
	MIR-H XT6 MECH, LOCK REAR HO. 2 C.BREAKER	1SDA105118R1		48,500
	MIR-V XT6 MECH, LOCK REAR HO. 2 C.BREAKER	1SDA105120R1		
XT7	MIR-P x XT6 F	1SDA105126R1		10,970
	Cable Kit for Interlock XT7			
	Cable Kit for Interlock XT7		Contact nearest sales office	Upon request
	Plate for Interlock XT7			

- Note : ** Following must be ordered to make the rear interlock.
1. A MIR-HR or MIR-VR
 2. A plate MIR-P for each circuit breaker to be interlocked
 3. Order 1 No. of frame and 2 Nos. of plate per interlocking set for XT1 ... XT6
 4. Order 2 Nos. of plate and 1 No. of Cable per interlocking set for XT7

■ Stock items

Tmax XT accessories



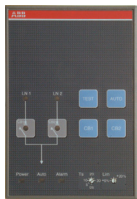
Motor operator with direct action - MOD			
Frame	Description	Ordering code	L.P.(₹)
XT1- XT3	MOD XT1-XT3 24 V dc	1SDA066457R1	36,800
	MOD XT1-XT3 48...60 V dc	1SDA066458R1	
	MOD XT1-XT3 110...125 V ac/dc	1SDA066459R1	31,640
	MOD XT1-XT3 220...250 V ac/dc	1SDA066460R1 ■	
	MOD XT1-XT3 380...440 V ac	1SDA066461R1	36,800
	MOD XT1-XT3 480...525 V ac	1SDA066462R1	



Stored Energy Motor Operator - MOE, Stored energy motor operator with electronics - MOE-E					
Frame	Description	MOE	L.P. (₹)	MOE-E	L.P. (₹)
XT2-XT4	24 V DC	1SDA066463R1	52,430	1SDA066469R1	56,550
	220...250 V AC / DC	1SDA066466R1 ■	45,170	1SDA066472R1	
	380...440 V AC	1SDA066467R1	52,430	1SDA066473R1	
XT5	220...250V AC/DC	1SDA104885R1	64,500	1SDA104905R1	74,500
XT6	220...250V AC/DC	1SDA104895R1	Upon request	1SDA104915R1	Upon request



Time delay device for under voltage release- UVD			
Frame	Description	Ordering code	L.P. (₹)
XT1....XT6	UVD XT1...XT6 24...30 Vac/dc	1SDA051357R1	58,140
	UVD XT1...XT6 220...250 Vac/dc	1SDA101982R1	
XT7	UVD 24/30 Vac/dc	1SDA038316R1	Upon request
	UVD 220...250 Vac/dc	1SDA038320R1	request



Automation transfer switch - ATS

Automatic transfer switch

Frame	Description	Ordering code	L.P. (₹)
XT2-XT4/ XT5- XT7/ E1.2-E6.2	ATS021	1SDA065523R1	Upon request
	ATS022	1SDA065524R1	

Note : ATS will be used along with either two motorized ACB or MCCBs with required interlocking and changeover base plate as per the requirement.



Residual current devices		3 Pole		4 Pole	
Frame	Description	Ordering code	L.P. (₹)	Ordering code	L.P. (₹)
XT1	RC Inst x XT1	1SDA067122R1	33,790	1SDA067124R1	39,100
	RC Sel x XT1	1SDA067123R1		1SDA067125R1	
	RC Sel 200 x XT1			1SDA067121R1	
XT2	RC Sel x XT2		83,740	1SDA067126R1	71,470
	RC Inst x XT3	1SDA067127R1		1SDA067129R1	90,060
XT3	RC Sel x XT3	1SDA067128R1	93,030	1SDA067130R1	99,100
	RC B Type x XT3			1SDA067132R1	1,39,850
	RC Sel x XT5			1SDA105131R1	Upon request

Accessories for electronic trip units

Frame	Description	Ordering code	L.P. (₹)
XT2-XT4	EKIP COM RTU for XT2-XT4 Ekip C Dip F/P	1SDA122799R1	Upon request
	EKIP COM RTU for XT2-XT4 Ekip C Dip W	1SDA122800R1	
	KIT x CONNECTION Vaux 24Vdc XT2-XT4 F/P	1SDA066980R1	
	KIT x CONNECTION Vaux 24Vdc XT2-XT4 W	1SDA066981R1	

Note:- F/P: Fixed/Plug-in ; W: Withdrawable



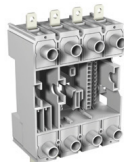
Test and configuration unit

Frame	Description	Ordering code	L.P. (₹)
XT2 - XT7	Ekip TT Trip test unit	1SDA066988R1	10,500

■ Stock items

Tmax XT conversion kit

Plug-in Kit



Fixed part of a plug-in circuit-breaker

+



Fixed circuit-breaker

+



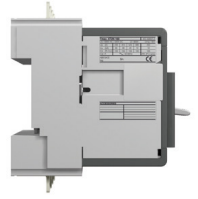
Moving part of a plug-in circuit-breaker

+



Connectors*

=



Plug-in circuit-breaker

Drawout Kit



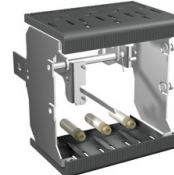
Fixed part of a withdrawable circuit-breaker

+



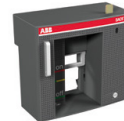
Fixed circuit-breaker

+



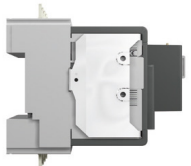
Moving part of a withdrawable circuit-breaker

+



Frontal accessory FLD**

=



Withdrawable circuit-breaker

Plug-in and drawout conversion

Frame	Description	3 Pole	L.P. (₹)	4 Pole	L.P. (₹)
XT1	Plug-in moving part	1SDA066276R1	6,850	1SDA066277R1	9,490
	Plug-in fixed part	1SDA068183R1	12,570	1SDA068185R1	17,860
XT2	Plug-in moving part	1SDA066278R1	7,640	1SDA066279R1	10,360
	Plug-in fixed part	1SDA068187R1	13,740	1SDA068190R1	19,500
XT3	Plug-in moving part	1SDA066280R1	9,470	1SDA066281R1	11,650
	Plug-in fixed part	1SDA068192R1	14,150	1SDA068194R1	20,520
XT4	Plug-in moving part	1SDA066282R1	11,100	1SDA066283R1	15,110
	Plug-in fixed part	1SDA068196R1	15,290	1SDA068198R1	21,170
XT5 400	Plug-in moving part	1SDA104707R1	Upon Request	1SDA104708R1	Upon Request
	Plug-in fixed part	1SDA104668R1		1SDA104672R1	
XT5 630	Plug-in moving part	1SDA104709R1	Upon Request	1SDA104710R1	Upon Request
	Plug-in fixed part	1SDA104676R1		1SDA104679R1	
XT2	Drawout moving part	1SDA066284R1	12,620	1SDA066285R1	17,860
	Drawout fixed part	1SDA068200R1	28,170	1SDA068202R1	38,810
XT4	Drawout moving part	1SDA066286R1	14,380	1SDA066287R1	19,500
	Drawout fixed part	1SDA068204R1	29,570	1SDA068206R1	41,030
XT5 400	Drawout moving part	1SDA104711R1	Upon Request	1SDA104712R1	Upon Request
	Drawout fixed part	1SDA104682R1		1SDA104686R1	
XT5 630	Drawout moving part	1SDA104713R1	Upon Request	1SDA104714R1	Upon Request
	Drawout fixed part	1SDA104690R1		1SDA104693R1	
XT6	Drawout moving part	1SDA104715R1	Upon Request	1SDA104716R1	Upon Request
	Drawout fixed part	1SDA104696R1		1SDA104699R1	
XT7	Drawout moving part	1SDA104702R1	Upon Request	1SDA104704R1	Upon Request
	Drawout fixed part	1SDA104717R1		1SDA104718R1	

Note:

* For plug-in MCCB with electrical accessories, connectors to be ordered

(1) For withdrawable MCCB with shunt opening and undervoltage release dedicated connectors are available

** FLD or rotary handle or motor operator is mandatory to select for a drawout MCCB

Connectors



Description	Ordering code	L.P. (₹)
Socket-plug panel connector with 3PINS (XT1...XT4)	1SDA066409R1	2,110
Socket-plug panel connector with 6PINS (XT1...XT4)	1SDA066410R1	4,050
Socket-plug panel connector with 9PINS (XT1...XT4)	1SDA066411R1	6,100
Socket-plug panel connector with 15PINS (XT1...XT4)	1SDA066412R1	10,030
Socket-plug connector of moving part 12PINS (XT2...XT4)	1SDA066413R1	10,810
Socket-plug connector of fixed part 12PINS (XT2...XT4)	1SDA066414R1	10,810
Connector 4th pole SOR-PS-SOR (XT2...XT4)	1SDA066415R1 ⁽¹⁾	2,100
Connector 4th pole UVR (XT2...XT4)	1SDA066418R1 ⁽¹⁾	1,930
Connector 4th pole YO (XT5)	1SDA104968R1 ⁽¹⁾	2,150
Connector 4th pole YU (XT5)	1SDA104970R1 ⁽¹⁾	1,980